



**HECOTEC**  
INDUSTRIAL DEVELOPMENT COMPANY

Portfolio

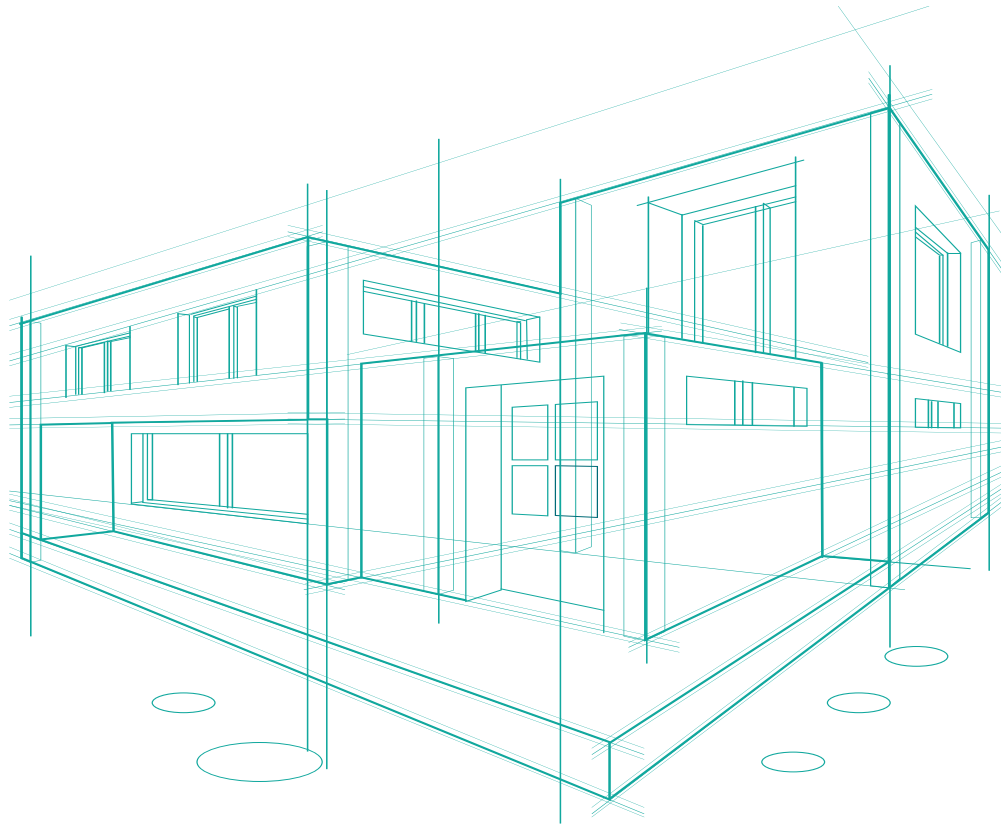


OUR MISSION IS  
TO ENLIGHTEN YOUR WAY TO SUCCESS



# About Us

---



Established in 2016, HECOTEC Limited Liability Company is an innovative EPC Contractor based in Baku, Azerbaijan. With the experienced multinational engineering staff, HECOTEC LLC is targeting to provide world-class Engineering, Procurement, Construction, Management, and Inspection services in the Regional and Global Market.

Our staff is qualified and capable to provide total project solutions ranging from conceptual design briefs up to full detailed engineering design, project management, construction and inspection works. We have proven working relationships with some leading experts in the fields of engineering and design which includes the Oil and Gas industry, and such expertise can be integrated into the highest quality solutions in support of our clients.

HECOTEC LLC has achieved ISO 9001:2015, ISO 14001:2015, and ISO45001:2018 certifications, ensuring adherence to international standards. In addition to its international certification, HECOTEC LLC has obtained several local governmental licenses, expanding its capabilities in various areas. These licenses encompass the Engineering and Design of buildings and structures requiring construction permits and involving information procedures. Moreover, HECOTEC LLC holds a license for the Construction and installation of buildings and structures that require permits. The company is also authorized for the Installation and repair of lifting equipment, metallurgical equipment, high-pressure boilers, and tanks. Furthermore, HECOTEC LLC possesses a license for conducting diagnostics and other technical inspections of equipment and technical devices used in potentially hazardous facilities. These licenses strengthen our ability to provide comprehensive services while ensuring compliance with applicable regulations. We aim to deliver projects on time, following leading project management and design practices.

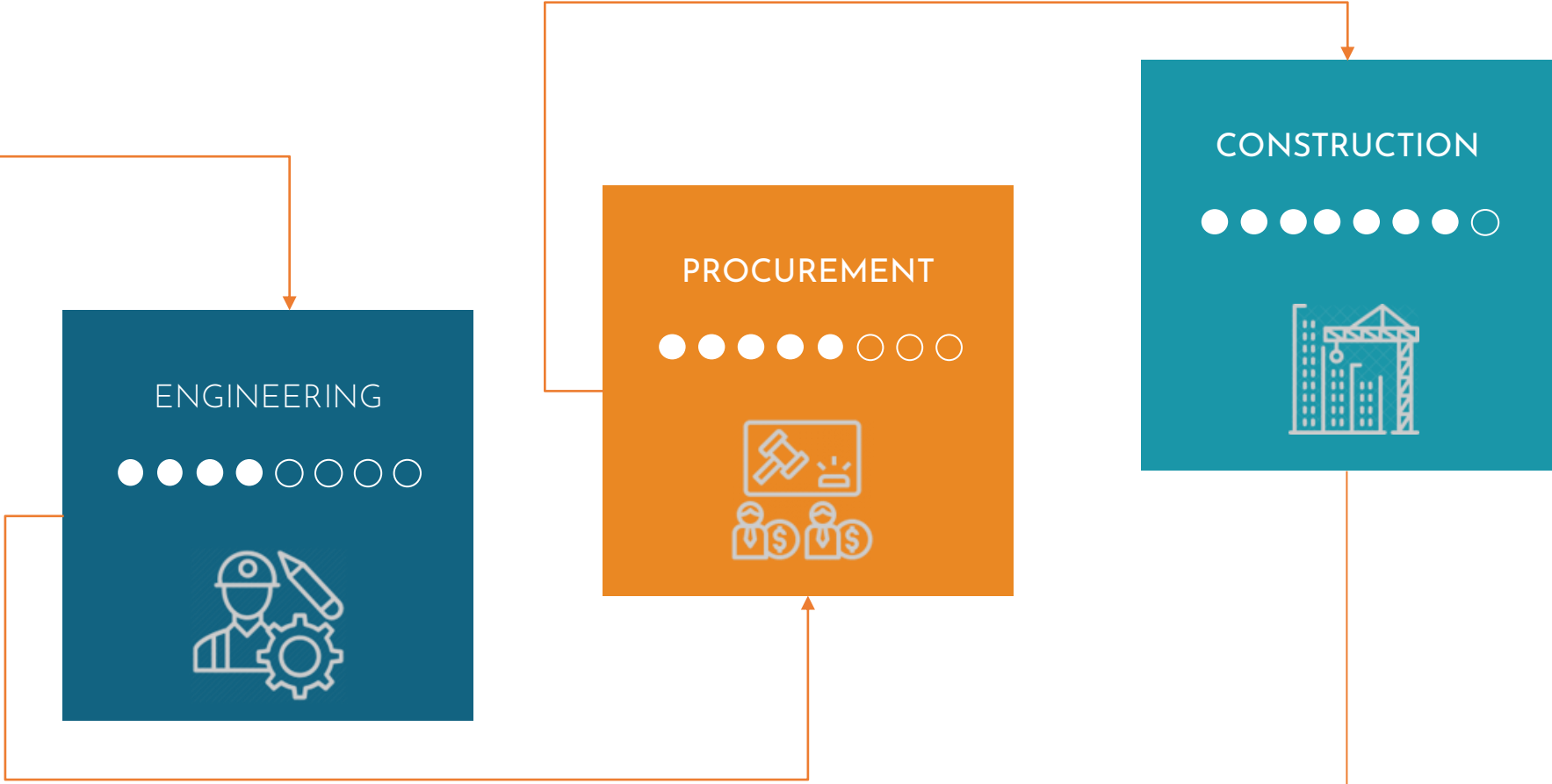
# Our Values

---

- ◆ Trust
- ◆ Customer Satisfaction
- ◆ Quality
- ◆ Integrity
- ◆ Innovation

- ◆ Continuous Improvement
- ◆ Leadership
- ◆ Collaboration
- ◆ Teamwork
- ◆ Care

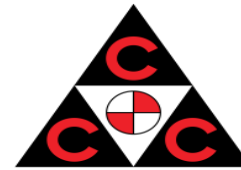
# We Do



# Our Customers



# Our Staff Worked For



# Competences

---

 Engineering

 Project Control

 Quality Management

 Construction

 HSE



# Engineering Services That We Offer

---

- Engineering Project Management
- Preparation of Procedures, Specifications and Method Statements
- Geodetic Engineering
- Geology Engineering
- HVAC & Fire Protection Systems
- Civil & Structural Engineering
- Pipeline Engineering
- Piping & Instrumentation Engineering
- Process Engineering
- Electrical & Telecommunication Engineering
- Welding Engineering
- Lifting Operations Support
- Corrosion Engineering
- Hydrostatic Testing
- As-built and Redline Mark-up Documentation & Close-out

WE DO ENGINEERING  
PROJECT MANAGEMENT



# We Do

---

## Project Engineering Management

- Engineering Deliverables Progress Review
- Management of Contractors and Subcontractors
- Holistic Risk Review
- Constructability Review
- Engineering Input on Procurement Management
- Bid Documents Review & Analysis
  
- Analyzing and Responding to
  - Requests for Information (RFI)
  - Request for Proposal (RFP)
  - Requests for Quotation (RFQ)
  
- Engineering Resources Management
- Engineering Scope Management
- Engineering Change Management

## Project Engineering Documentation Preparation

- Engineering Management Plan
- Engineering Document and Data Management Plan
- Risk Management Plan
- Risk Register
- Change Log
- Assumption Log
- Issue Log
- Performance Review File

# Method Statements, Procedures & Specifications



- Preparation of General Method Statements for Various Construction Activities
- Preparation of Site-Specific Method Statements for Various Construction Activities
- Preparation of Specifications for Piping, Pipeline, Process, Civil, Structural, Geotechnical, Electrical, Instrumentation, Telecom, Corrosion, Welding, Coating, and Painting Activities
- Preparation of Procedure for Operation of Oil & Gas Facilities
- Preparation of Procedure for Hydrostatic Testing & Test Packs
- Preparation of Procedure for Flange Management
- Preparation of Procedure for Preservation activities

*\*All activities considered Offshore facilities*



# Geodetic Engineering

---

- Preparation of Field Detailed Terrain Models (DTM) (Including 3D)
- Preparation of Detailed Terrain Models for Water Basin Bed (sea, lake, river, etc.)
- Bathymetrical Measurements
- Preparation of Digital Elevation Models (DEM)
- Preparation of Field and Topographical Maps
- Preparation of various Geodetic and Topographical Reports
- Preparation of Statical Observation Reports for Existing and New Established Control Points/Benchmarks
- Geospatial GIS Solutions
- Topographical Survey, 3D Scanning, Establishment of Survey Control Points/Benchmarks

# Geology Engineering

---

## Geotechnical Engineering

- Preparation of geotechnical investigation plans, method statements for civil structural foundation, pipeline routes, micro-tunneling etc.
- Site evaluations according to the design recommendations/requirements
- Soil improvement consulting and soil bearing calculation
- Interpretation of geotechnical test data
- Preparation of geotechnical investigation reports
- Preparation of dewatering system plans for construction pits, deep wells, wellpoint, and horizontal dewatering systems
- Estimation of discharged groundwater volume for dewatering systems
- Groundwater seepage analysis, 2D and 3D modeling of the groundwater in dewatering systems
- Static calculation of retaining wall, gabion retaining walls, cantilever retaining wall, anchored retaining wall, sheet pile retaining wall
- Preparation of detailed design of retaining walls
- Slope stability analysis, 2D and 3D visualization of slope stability
- Land sliding investigations and analysis, prevention measures, 2D & 3D Modelling, and visual presentation of land sliding areas

# Geology Engineering

---

## Hydrogeological Engineering

- Groundwater Exploration, Data Acquisition, Resource Assessment, Development and Management
- Groundwater Contamination Assessment Remediation and Management
- Integrated Surface Water and Groundwater Flow and Contaminant Modelling
- Design of Local and Regional Groundwater Resource Management Plans
- Predictive simulations for assessment of remedial strategies
- Prediction of the Ground Water Dynamics
- Dam Seepage Assessment
- Surface Water Evaluation, Estimation and Reporting (River, Lake, Channel)
- Flooding and Droughts Prediction
- Flooding Risks Assessment and Precautions
- Mineral and Thermal Water Prospecting and Exploring
- Increasing Productivity and Automatization of the Water Wells Production

# Geology Engineering

---

## Geophysics Engineering

- Geophysical Investigations
- Well logging (Gamma-Ray, Neutron-Gamma, Neutron- Neutron, Resistivity, Thermo, Acoustic, Spontaneous Potential)
- Magnetometric Exploration
- Gravimetric Exploration
- Magnetotelluric Exploration
- Vertical Electrical Sounding
- Electrical Tomographic
- Georadar / Ground Penetration Radar
- Investigation of contaminated sites e.g., abandoned Waste Dumps (Environmental Geophysics)
- Self-Potential Measurements
- Preparation of Geophysical Reports



# HVAC & Fire Protection Systems

---

- Water Cooled System Design
- Air Cooled AC System Design
- Ventilation System Design
- Outside Air System Design
- Smoke Detector
- Variable Refrigerant Flow System Design
- Indoor Air Quality Filtration Systems
- Heat Recovery System Design
- Equipment Sizing
- Thermal Load & Pressure Drop Calculations
- Automatic Sprinkler and Standpipe Systems
- Gas fire suppression systems
- Hydraulic calculations
- Water supply flow test and analysis
- Fire protection systems audit and condition assessments
- Commercial kitchen hood fire suppression systems

*\*All services include Offshore installations.*

# Civil & Structural Engineering


---

- Pipe Support Design and Calculation
- Calculation of the Allowable Loads for Pipe Clamps, Clamped Shoes, Welded Shoes, etc.
- Preparation of the General and Specific Structural Reports
- Requisition of Pipe Support Materials
- 2D and 3D Structural Analysis Under Both Static and Dynamic Loads (storm, earthquake, snow, water etc.)
- Obtaining Planning and/or Building Regulations Approval
- Preparation of the Drawings, Specifications and Computer 3D Models of Structures (MEP & BIM)
- Evaluation of structures at risk of collapse and consultation on improvement of their structural integrity
- Development of construction plans and blueprints
- Advising on suitable materials for a build
- Preparation of the paving, grading and drainage plans
- Detailed Design of Transportation Infrastructures (Highways, Motor Roads, Service Roads and Bridges)

*\*Structural related services includes Offshore installations*

# Water and Wastewater Treatment Engineering



- Engineering and Design of Bio-Fouling Copper Chlorine (BFCC) system for Onshore and Offshore facilities
  - Engineering and Design of Cooling Medium, Sea water and Fresh water systems
  - Preparation of Poseidon model for Cooling Medium and Seawater systems
  - Preparation of SOG for Cooling Medium & Seawater systems
  - Master planning, system modeling and design of the wastewater systems
  - Preliminary and final studies of the wastewater systems
  - Design of ground water supply systems
  - Storage Tank Design and Rehabilitation plans
  - Master planning, system modeling and design of flood control channels, detention ponds and municipal storm sewer systems
- 

# Pipeline Engineering

---

- Route Selection
- Design of Pump/Compressor Stations (main & intermediate)
- Pipe Material Selection
- Pipeline Sizing
- Pipeline Coating Selection (Internal & External)
- Preparation of the typical and detailed drawings for crossings (Open Cut & Trenchless)
- Consultation on Horizontal Directional Drilling (HDD) operations
- Cathodic Protection Design
- Preparation of Various Documentations (Crossing Schedule, CP schedule, Pipeline Alignment Sheets, Route Plans, Bend Schedule, Mechanical Design Reports)
- Pipeline Out of Straightness Check before Backfilling
- Preparation of pipeline stress analysis and calculations
- Preparation of Pipeline Movement Assessment Reports base on the ILI Data
- Preparation of Pipeline axis misalignment recovery plans
- Water distribution System Analysis and Design
- Identification of the Welding Requirements for pipeline construction

# Piping & Instrumentation Engineering

---

- Pipe and Valve Sizing
- Preparation of the Piping & Instrumentation Diagrams (P&IDs)
- Preparation of the isometric drawings (ISOs) (Destruct and Spool Isometrics)
- Estimation of Material Take off (MTO)
- Preparation of preliminary manual/computer line stress calculations (including thermal, dead weight, loop, etc.) with modeling, loading calculations and summaries of piping systems
- Selection of piping materials required and evaluation of service life and suitability
- Design and Development of New Control Systems
- Testing, Maintaining and Modifying Existing Control Systems
- Development of Instrumentation Datasheets, Loop Drawings, Diagrams and Installation Detail Drawings
- Preparation of Equipment List
- Preparation of Torque and Tension Calculation Reports
- Preparation of Weight Control Sheet (Offshore Only)
- Preparation of Tie-in Reports (Survey, Tie-in Location Identification, Tie-In Location Plan, Tie-in Detail Drawing)

*\*Services includes Offshore installations*

# Process Engineering

- Preparation of Steady-state HYSYS Simulation using client data and review
- Preparation of Process Flow Diagrams (PFDs) (including BFCC system)
- Preparation of Utility Flow Diagrams (UFDs) (including BFCC system)
- Preparation of Heat & Mass Balance Diagrams
- Perform, Review and Check the Safety Valve Relief Load Calculation (as per API standard)
- Perform Settle-out calculation
- Perform hydraulic calculation and Restriction Orifice (RO) sizing
- Preparation and Review of Cause & Effect Matrix, Alarm & Trip set points in P&IDs, and Alarm/Trip list
- Preparation of the Design basis, Operating Control & Safeguarding Philosophies, and Control Narratives
- Preparation of the Equipment Process Datasheets & Review Vendor Data
- Conduct Dynamic Simulation, Transient, Surge, Minimum Metal Design Temperature (MDMT) studies
- Conduct Depressurization (Blowdown) Studies, Flare Load Estimation, and Flare System Design
- Vessel (Separator /Slug Catcher )/Tank/ Vent Knock-out (KO) Drum Sizing
- Heat Exchanger Sizing /Rating
- HAZOP/SIL (LOPA) Review & Submission of Actions Close-outs

*\*Services includes Offshore installations*

# Electrical Engineering

---

- Design of electrical systems, assessment of new or existing electrical equipment and system, consulting
- on improvement and planning of rehabilitation works
- Power System Analysis: Short Circuit, Load Flow Calculation and Motor Start-up Analysis
- Preparation of Single Line Diagram, Cable Schedule and Load List
- Electrical Grounding and Bonding Calculation
- Design of LV, MV and HV Switchgear and GIS
- LV, MV and HV Cable Sizing
- Transformer, UPS and Emergency Generator Sizing and Selection
- Electrical Heat Tracing Design
- Arc Flash Energy Calculations
- Material Requisition Preparation and Review
- Power Management System (PMS) and SCADA

*\*Services includes Offshore installations*

# Welding Engineering

---

- Analyzing Engineering Designs for Welding Requirements
- Preparation of Welding Procedures and Associated Documentation
- Management of Welding Procedure Qualifications
- Conducting Failure Analyses and Cause Analyses on Welding Issues

# Lifting Engineering

---

- Preparation of Lifting Plans Including Calculations, Accessories Selection, Activity Sequence, Drawings and Models
- Risk Assessment of Routine and Complex Lifting Operations
- Performing Lifting Associated audits
- Lifting Incident Investigation and Reporting of Root Causes

*\*Services includes Offshore installations.*



# Corrosion Engineering

---

- Design, Consulting on Installation & Commissioning of Impressed Current Ground Beds, Horizontal, Shallow, Vertical,
- Distribute Anode Bed and Deep Well For Pipeline, Tanks, Vessel & etc.
- Control of Applicable Codes (ISO, EN, NACE & ASTM)
- Impressed Current System Design, Consulting on Installation & Commissioning of Pipeline With Expansion Loop
- Impressed Current System Design, Consulting on Installation & Commissioning for Wells
- Impressed Current System Design, Consulting on Installation & Commissioning Having Multiple Pipeline
- Design of CP system for UG utility & Overhead Cable Crossings
- Design of Galvanic Anodes, Consulting on Installation & Commissioning for Pipeline Having Cased Crossing Facility
- Field Surveys for Design of new CP System for Pipeline Tanks, Vessel & etc.
- Direct current (D.C) /Alternate Current (A.C) Interference Testing & Mitigation
- Design of Galvanic Anodes, Consulting on Installation & Commissioning For Pipeline With Multiple Crossing
- Preparation of Technical Assessment report for Coating Defect according to results of Direct Current Voltage Gradient Survey (DCVG)

# Corrosion Engineering

---

- Preparation of Technical Assessment report for Coating Defect according to results of Direct Current Voltage Gradient Survey (DCVG)
- Preparation of Technical Reports for assessment of the effectiveness of the Cathodic Protection System according to the results of Close Interval Potential Survey (CIPS)
- Corrosion Assessment Based On Results From NDT Techniques
- Renovation of the Defective/Depleted Ground Beds
- Review and Analyze Contract Document for Cathodic Protection Scope
- Preparing Cathodic Protection Design & Philosophy
- Evaluation of Quantity of Material Required to Execute Project
- Determining the Root Cause For Corrosion, Determining Remaining Life Of Anode, and Reassessment Intervals
- Engineering, design, maintenance, monitoring, and rectification of Bio-Fouling Copper Chlorine and Metrol Sea-Cell electro chlorinator

*\*Services include Offshore installations*

# Hydrostatic Testing

---

- Preparation of the Design Drawings and Procurement List for Fabrication of Pig Launchers/Receivers,
- High Pressure Test Heads, Test Manifold, Test Cabin Instrumentation Layouts
- Preparation of hydrostatic test and pigging calculations for under-ground and above ground
- piping/pipeline systems
- Planning of the plant shutdown-maintenance activities
- Preparation of the hydrostatic testing philosophies and risk assessments

# As-built Documentation and Close-out

---

- As-built Data Collection, Verification & Sort Out
- Redline Mark-up (RLMU) and back drafting
- Preparation of the As-built Spreadsheets for Geospatial Models

# Engineering Projects that Our Team Worked For



- Absheron EPS Brownfield Tie-in SOW and LQ Building Upgrade Project - Azerbaijan
  - Heydar Aliyev Oil Refinery (HAOR) Modernization and Reconstruction Project - Azerbaijan
  - South Caucasus Pipeline Expansion Project - Azerbaijan, Georgia
  - TANAP - Turkey, Georgia
  - TAP - Trans Adriatic Pipeline - Albania
  - Western Route Export Pipeline Sectional Replacement Project - Azerbaijan, Georgia
  - Azeri-Chirag-Gunashli Project
  - Umid 2 Development Project - Azerbaijan
  - Future Growth Project / Wellhead Pressure Management Project (FGP/WPMP), Gathering System Pipelines - Kazakhstan
  - Absheron EPCM - Azerbaijan
  - Azeri-Central-East EPCM - Azerbaijan
  - Dashgil Terminal Phase-1 - Azerbaijan
  - Absheron EPS Platform Project - Azerbaijan
  - New Oil Gas Processing Complex - Azerbaijan
- 

# Engineering Projects that Our Team Worked For



- SAS Full Field Development Project - U.A.E.
- BFCC Projects for PDO, ORPIC, Schlumberger, Ferovial and Stomo - Sultanate of Oman
- ESSAR Blast Furnace Expansion Project - India
- AGP Project - Russia
- Oghuz-Gabala-Baku Water Pipeline Project
- Gabala City Water Sewage Pipeline Systems - Azerbaijan
- Astara Region Water Supply and Sewerage Project - Azerbaijan
- Pasha Life Offices - Azerbaijan
- BASF Caspian Chemical Company - Preparation of P&IDs and Process flow diagrams for plant



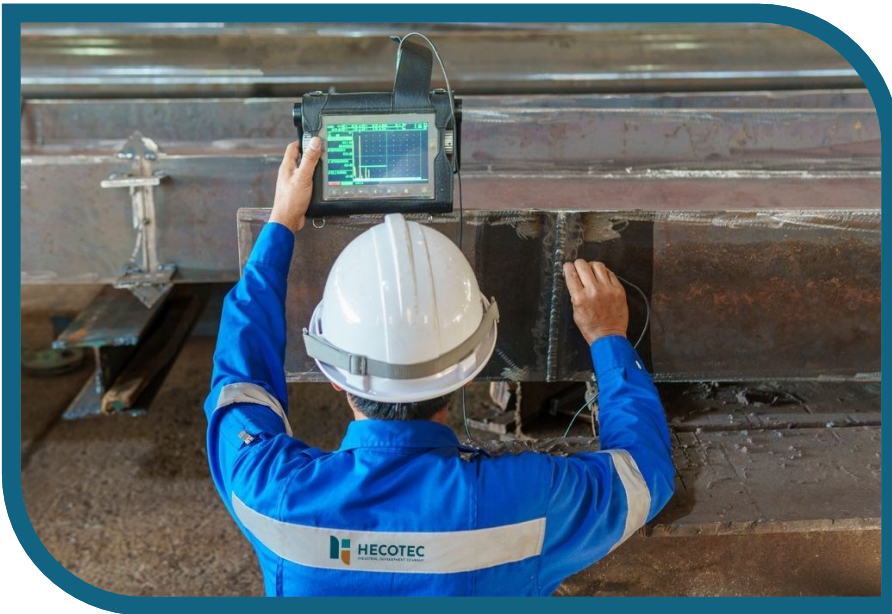


QUALITY MANAGEMENT

# Quality Management

---

- Perform and coordinate inspections and determine quality assurance testing models of raw materials and finished products
- Preparation of Quality Management Plan
- Prepare, document, and execute detailed test plans, and defect reports
- Review and approve quality requirements for manufacturing planning, supplier purchase orders, and engineering specifications to ensure contract compliance
- Develop, document, and audit practices, program quality, and metrics reporting system
- Analyze all products and non-conformance processes and evaluate all documents to ensure the maintenance of optimal quality and preparing monthly reports to evaluate the performance
- Preparation of method statement for the activity including risk assessment, job safety, environmental analysis, and Inspection Test Plan and Checklist based on specifications of the project
- Preparation of Turnover Dossiers

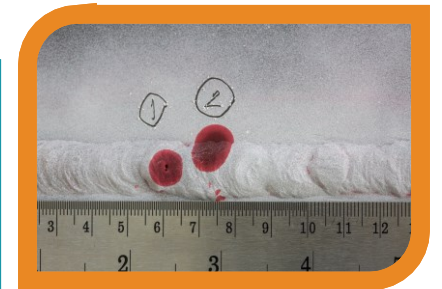


## INSPECTION SERVICES



# We offer

- Inspection of Reinforced Concrete Structures
- Visual Inspection (VT)
- Ultrasonic Testing (UT)
- Magnetic Particle Testing (MT)
- Liquid Penetrant Testing (PT)
- Dye Penetrant Testing (DPT)
- Radiographic Testing (RT)
- Eddy Current Testing (ECT)
- Acoustic Emission Testing (AET)
- Macroscopic Examination
- Microscopic Examination (Metallography)
- Hardness Testing
- Residual Stress Analysis
- Mechanical Testing
- Positive Material Identification
- Leak Testing
- Hydrostatic Testing
- Bolt and Torque Inspection
- Paint and Coating Inspection
- Inspection of Pressure Vessels and Compressors
- Inspection of Lifting Equipment and Accessories
- Inspection of Electrical Devices and Systems
- Inspection of Offshore and Onshore Drilling Equipment
- Concrete Testing
- Inspection of Renewable Energy Installations
- Inspection of Fire & Gas System
- Inspection of HVAC System
- Soil and Rock Testing





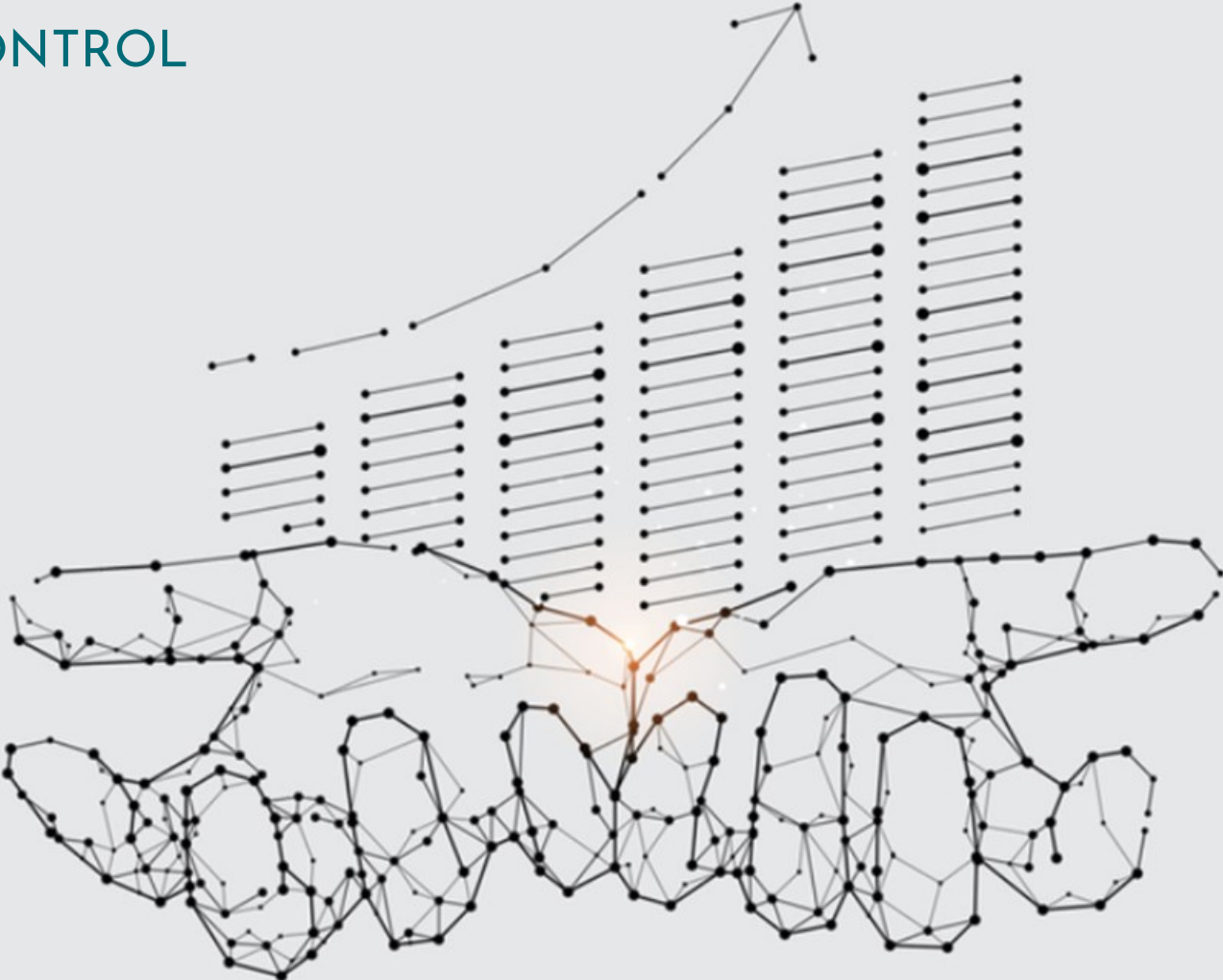
HEALTH, SAFETY & ENVIRONMENT  
ENGINEERING

# Health, Safety & Environment Engineering

---

- Project Safety Management
- Preparation of HSE Documentation - Risk Assessment, Inspection report, HSE Policy & Procedures, Manuals, etc.
- Implementation of HSE Management System, Compiling Pre-Construction Information, and Design risk assessment, Incident Investigation, etc.
- Audit, Inspection, Handbook Development, Contractors Assessments
- Regulatory compliance
- HSE Consultancy and Mentoring
- Risk Management and Mitigating Strategy

# PROJECT CONTROL



# Project Control



- Development of a project work schedule at the L4 level (L5 if necessary) in primavera P6
- Development of a progress measurement system based on the volume of work and calculation of the physical percentage of the project
- Preparation of S-curve based on the approved baseline plan
- Preparation and submission of weekly and monthly reports
- Inform the construction team of any deviations that may occur in the project
- Preparation of 3 weeks look ahead reporting extract schedule
- Project Progress analysis using the Earned Value Method and EVM analysis





WE DO CONSTRUCTION & MAINTENANCE WORKS

# For

---



OIL & GAS  
INDUSTRY



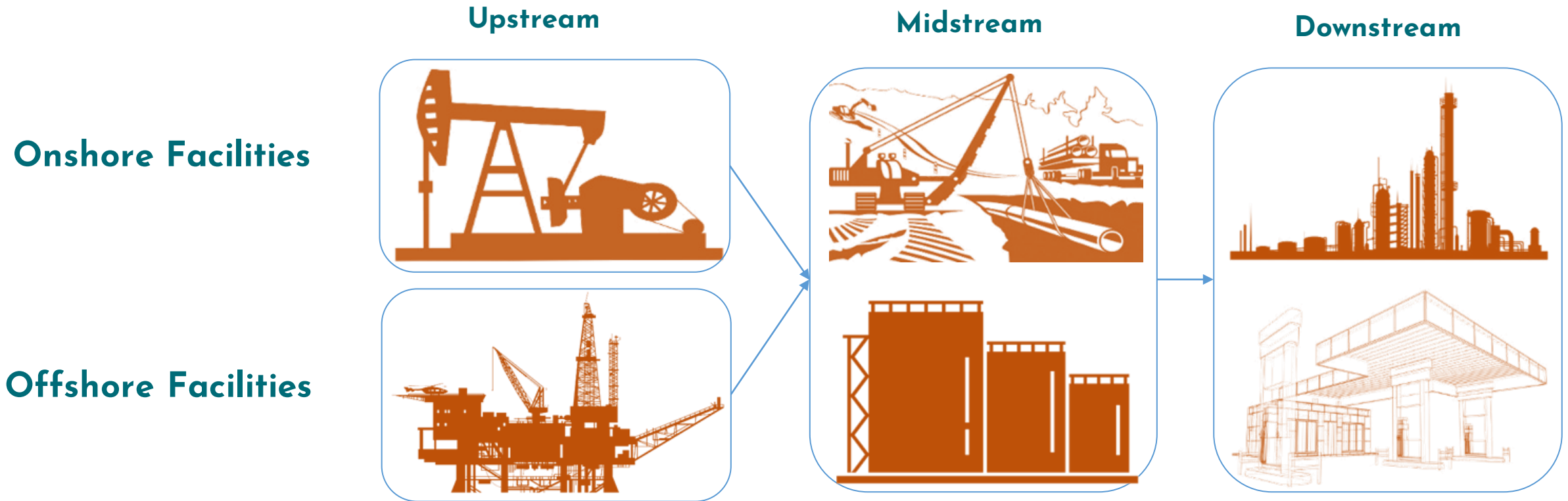
WATER SUPPLY  
FIELD



CIVIL CONSTRUCTION

# For Oil & Gas Industry

---





# For Oil & Gas Industry

---

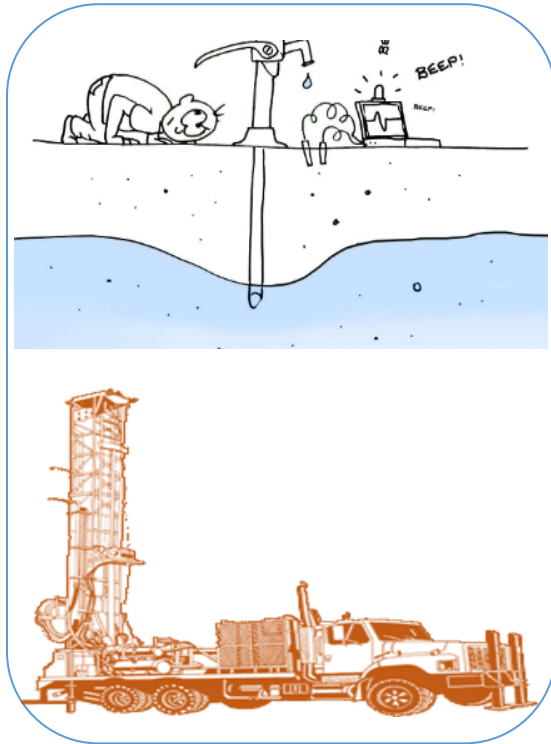
- Construction Management
- Installation and Maintenance of Onshore Oil Rigs
- Field Topographical Survey Activities including the survey of water source beds (river, lake, sea etc.)
- Geotechnical Investigations (including soil laboratory testing)
- Construction of groundwater control systems
- Site Preparation Activities Including Vegetation Cutting
- Construction of Material Storage Areas including Warehouses
- Identification of Underground Utilities (pipes, cables etc.)
- Excavation, Backfilling & Reinstatement
- Pipeline & Piping Construction Works (Bending, Welding, UT, NDT, Coating)
- Electrical and Instrumentation Works
- Installation of pumps, compressors and vessels
- HVAC System Installation
- Lifting and Lowering-in Operations
- Rope Access Services\*
- Scaffolding
- Direct Current Voltage Gradient (DCVG) & Close Interval Potential (CIP) Surveys

# For Water Supply Field

---

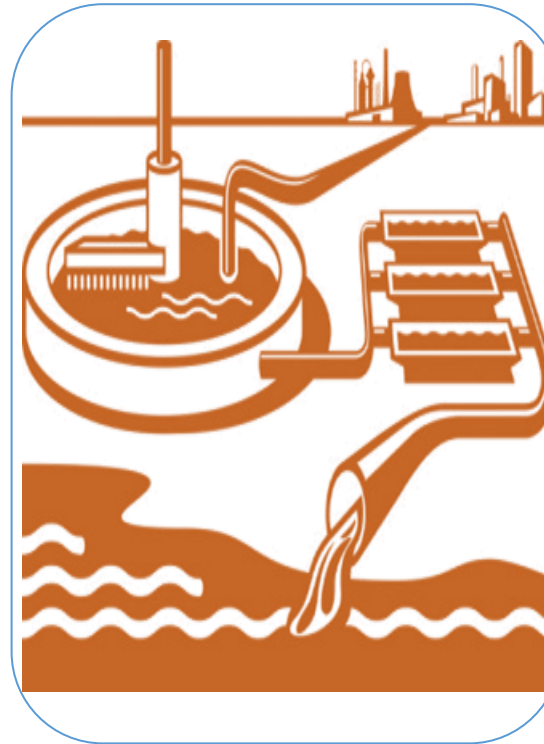
## Upstream

### Water source Investigations



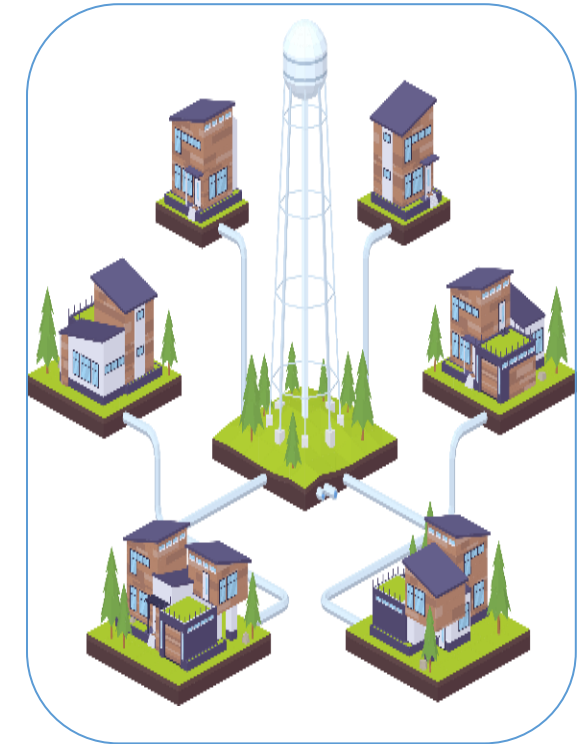
## Midstream

### Water Treatment Systems



## Downstream

### Water Distribution Systems



# For Water Supply Field

---

- Ground Water Exploration
- Ground Water Monitoring
- Flooding Precaution Activities
- Mineral and Thermal Water Exploration
- Water Well Drilling, Maintenance and Restoration
- Well Washing and Disinfection
- Hydrogeological Drilling supervision
- Hydraulic pumping tests (long term and short term)
- Group Pumping Test and Monitoring Water Well Network
- Inside Video diagnostic of the Water Wells
- Construction of the Water Treatment Plants (pumps, vessels, piping, pipeline etc.)
- Construction of the Water Distribution Networks

# For Urban Development

---

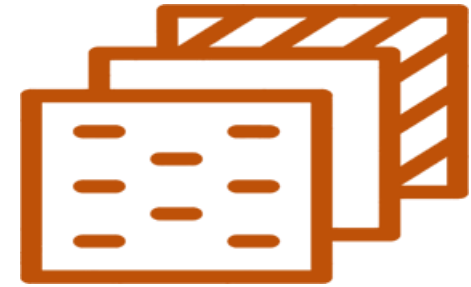
Scaffolding



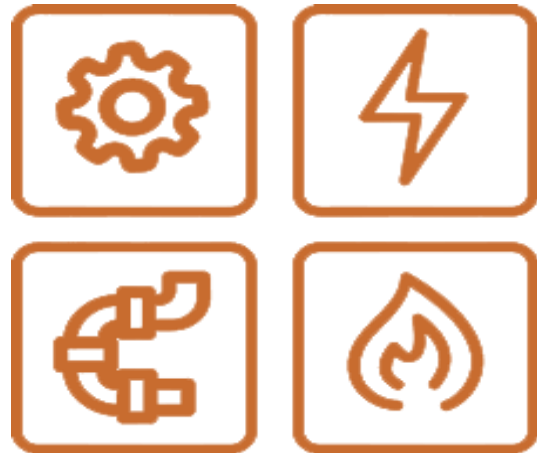
Residential Buildings



Painting & Insulation



MEP



Rope Access Services



Transportation Infrastructure  
(Highways, Roads and Bridges)



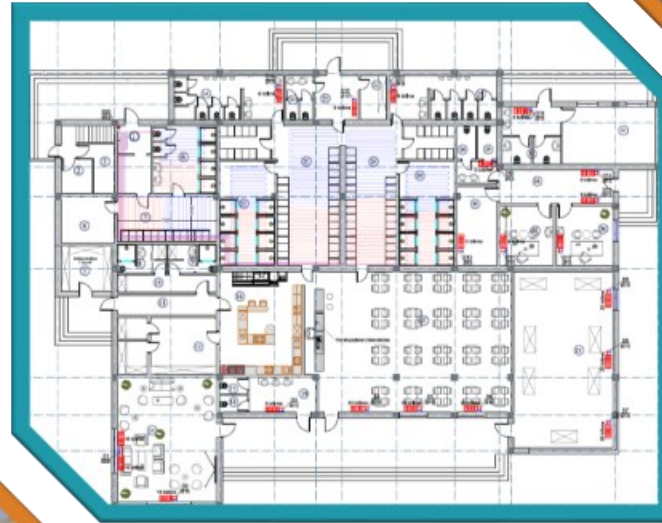


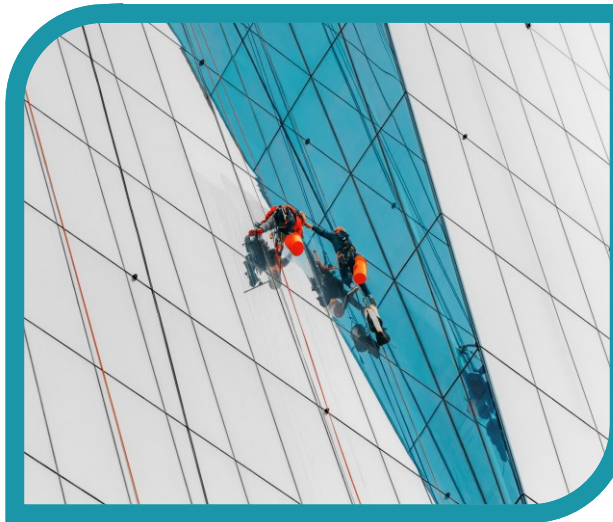
## FIT-OUT WORKS

# We Offer

---

- Exterior, Interior design, and space planning
- Custom furniture and fixtures
- Electrical, plumbing, and HVAC services
- Flooring, ceilings, and wall finishes
- IT and security system integration
- Construction of reinforced concrete structures
- Lighting design and installation
- Window treatments and coverings





## ROPE ACCESS SERVICES

# We Offer



HECOTEC LLC's Rope Access team is formed by the International Rope Access Trade Association (IRATA) certified professionals and therefore operates to the highest international safety standards and best practices for all rope access tasks.

- Installation of a piping system (welding, NDT inspection, coating, etc.)
- Blasting activities
- Hydro and thermal isolation works
- Installation of lighting systems
- Installation of gutter system
- Installation of a ventilation system
- Installation of steel structures (towers, docks, piers, etc.)
- NDT inspection of various steel structures
- Painting works (towers, docks, vessels, piers, tanks, etc.)
- Cleaning works in confined spaces (industrial and non-industrial chimneys, tanks, tunnels, silos, crackers, etc.)
- Assembling and disassembling advertising banners
- Assembling and replacement of stained glasses



# Advantages of Rope Access Services

---

The rope access is preferable due to the time at which technicians can access and egress challenging locations with minimal cost impacts on operations.

The advantages of rope access services over traditional access methods are following:

- Elimination of mobilization and demobilization of EWP's and cranes
- Performing task with minimum manpower
- Quick response time and faster access that reduces operational downtime
- Minimizes potential damages to structures and assets
- Elimination of shutdown expenses for in-service inspections



## SCAFFOLDING SERVICES

# We offer



- Erecting scaffolding structures for various construction projects including buildings, bridges, and other infrastructure.
- Assessing the site to determine the type and amount of scaffolding required.
- Designing and planning the scaffolding system to ensure stability, safety, and efficient work access.
- Installing and assembling the scaffolding components according to the design and safety standards.
- Securing the scaffolding structure by anchoring it to the building or ground using appropriate measures.
- Erecting temporary staircases, walkways, and ladders within the scaffolding to facilitate movement and access for workers.
- Providing ongoing maintenance and inspections of the scaffolding to ensure its integrity and safety.
- Dismantling the scaffolding structure once the construction project is completed or when it is no longer required.
- Training and supervising scaffolding team members to ensure safe and efficient work practices.
- Collaborating with other construction professionals such as architects, engineers, and project managers to ensure the scaffolding meets project requirements.
- Providing emergency scaffolding support in case of unforeseen circumstances such as building collapse or structural damage.



COMPLETED PROJECTS

# PMC Related Projects

---

**Project:** Absheron Early Production Scheme - Brownfield Tie-ins SOW and LQ Building Upgrade

**Client:** JOCAP B.V.

**Main Contractor:** BOS Shelf LLC

**Construction Contractor:** SOCAR OGCT

**Subcontractor:** HECOTEC LLC

**Project duration:** 2 years

## Scope of Work:

- Project Management Support including Project Planning
- Management of Technical Changes
- Construction Documentation Preparation
- Quality Assurance Documentation Preparation and Quality Control Audits
- HSE Documentation Preparation and HSE Audits
- Project Data & Document Management

# PMC Related Projects

---

Project: Absheron Early Production Scheme - Brownfield Tie-ins SOW and LQ Building Upgrade

Client: JOCAP B.V.

Main Contractor: BOS Shelf LLC

Construction Contractor: SOCAR OGCT

Subcontractor: HECOTEC LLC



# Construction Related Projects

**Project:** CAPEX and OPEX Concrete Projects

**Client:** NORM Cement Plant

**Contractor:** HECOTEC LLC

**Project BOQ:** 2000 M<sup>2</sup> Area

## Scope of Work:

- Project Management and Project Planning
- Management of the Technical Changes
- Preparation of the Project Specific Construction, QA/QC, and HSE Documentation
- Topographical survey of the area
- Demolition of the existing reinforced concrete structures
- Compaction of the areas
- Formwork erection, rebar-mesh installation, pouring concrete
- Repair of concrete floor in front of freight elevator of preheater building
- Repair of the concrete floor of the building of the clinker cooling unit
- Repair of the concrete floor inside the cement mill building
- Repair of the concrete floor of the warehouses for storage of raw materials and additive
- Construction of the concrete walkways to the raw material mill
- Repair of the concrete surfaces around the west wing of the warehouse for storage of the additives
- Repair of the existing concrete drainage channels
- Construction of the concrete drainage channels
- Preparation of the as-built documentation

# Project Overview

Project: CAPEX and OPEX Concrete Projects

Client: NORM Cement Plant

Contractor: HECOTEC LLC

Project BOQ: 2000 M<sup>2</sup> Area





# Construction Related Projects

Project: Rehabilitation of Old Slurry building

Client: HOLCIM Cement Plant

Contractor: HECOTEC LLC

Project BOQ : 4050 M<sup>2</sup> Area

## Scope of Work:

- Project Management and Project Planning
- Management of the Technical Changes
- Preparation of the Project Specific Construction, QA/QC, and HSE Documentation
- Topographical survey of the area
- Leveling of the area after removal of the debris from the area
- Compaction of the area
- Formwork erection, rebar-mesh installation, pouring concrete
- Quality control of the civil works



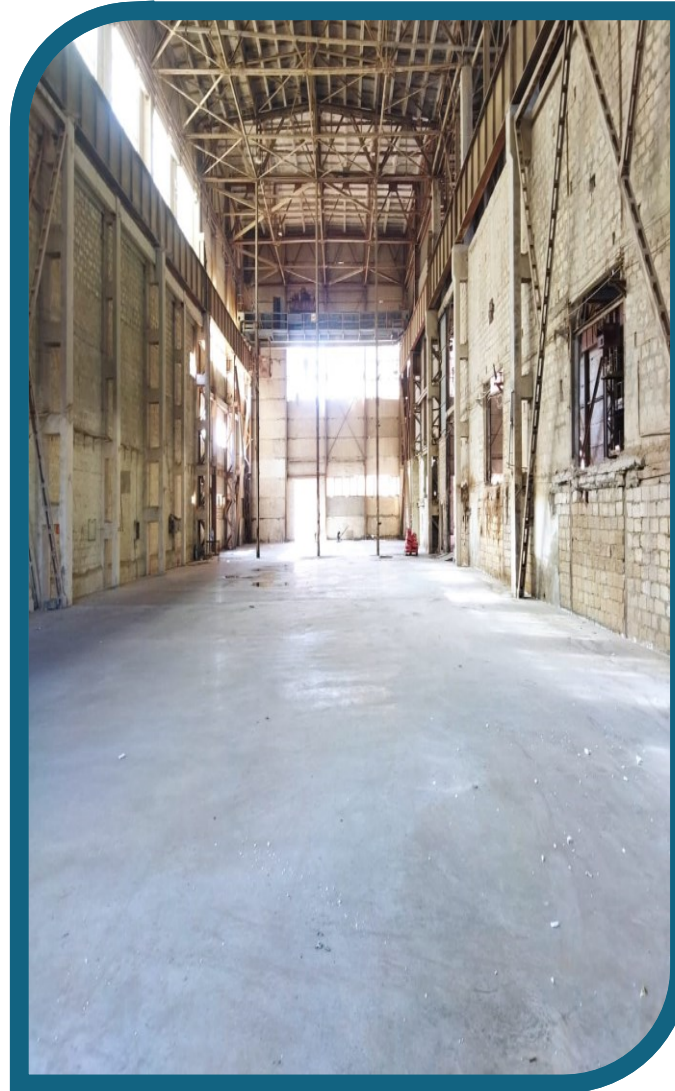
# Project Overview

Project: Rehabilitation of Old Slurry building

Client: HOLCIM Cement Plant

Contractor: HECOTEC LLC

Project BOQ : 4050 M<sup>2</sup> Area



# Construction Related Projects




**Project:** Engineering, Procurement, and Construction of the Parking Area with Steel-Structure Elements

**Client:** HOLCIM Cement Plant

**Contractor:** HECOTEC LLC

## Scope of Work:

- Project Management and Project Planning
  - Project Data & Document Management
  - Development of the engineering drawings and calculation reports (structural analysis)
  - Management of Technical Changes
  - Development of the Project Specific Construction (including lifting plans), QA/QC, and HSE Documentation
  - Procurement, Fabrication and Installation of the steel-structural elements
  - Quality Control of the fabricated elements (Dimensional control, NDT of welding joints, Paint inspection etc.)
- 

# Project Overview

---



# Project Overview

---



## Construction Related Projects

---

**Project:** Fabrication and installation of the sliding roof above the main bag filter and the upper filter chamber

**Client:** NORM Cement Plant

**Contractor:** HECOTEC LLC

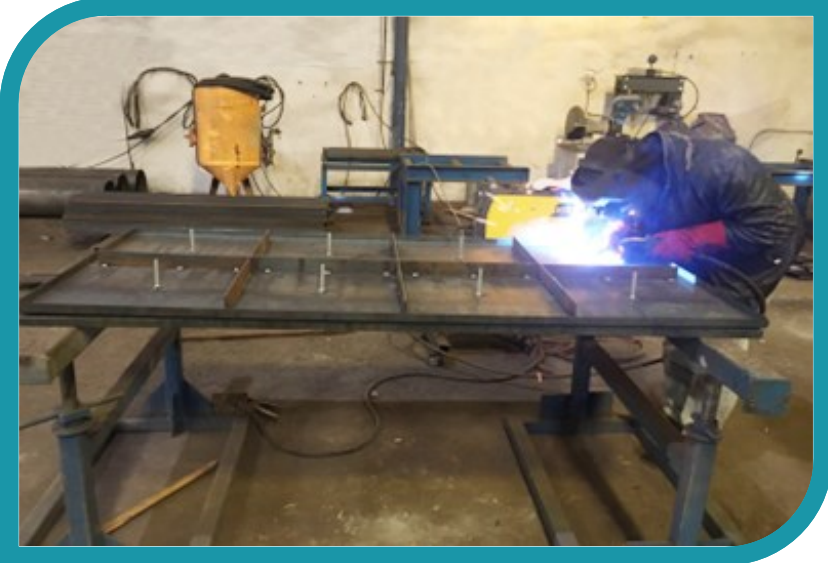
**Special Conditions:** Shutdown

**Project BOQ :** 80 tons

### Scope of Work:

- Project Management and Project Planning
- Project Data & Document Management
- Decommissioning of the steel-structural sliding roof
- Engineering, Procurement of the materials, Fabrication, and Installation of the sliding roof
- Reinforcement of the current steel framework
- Management of the Technical Changes
- Development of the Project Specific Construction (including lifting plans), QA/QC, and HSE Documentation
- Quality Control of the fabricated elements (Dimensional control, NDT of welding joints, Paint inspection etc.)

# Project Overview - Fabrication



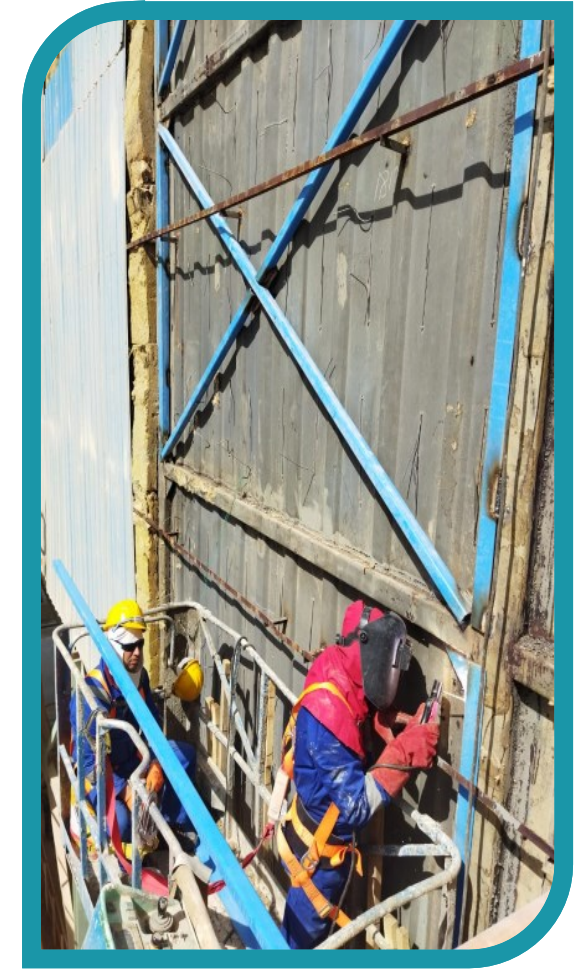
# Project Overview - Site visit prior to decommissioning

---





# Project Overview - Reinforcement of the existing steel framework



# Project Overview - Installation



# Construction Related Projects

---

Client: NORM OJSC

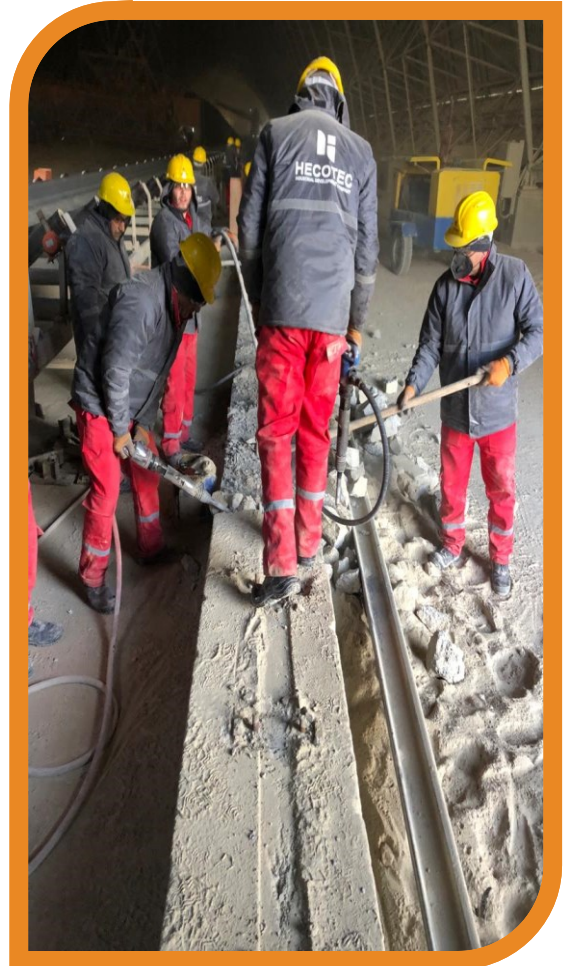
Contractor: HECOTEC LLC

Project: Renovation Work for Stacker Loader Rails

## Scope of Work:

- Project Management and Project Planning
- Project Data & Document Management
- Dismantling the Stacker rails in the Limestone/Clay warehouse and transporting it to the open warehouse area.
- Demolition and removal of the existing concrete under the rails
- Drilling the slots for the new threaded Rod and placing the rods with epoxy
- Installation of new rails of the loading unit (Stacker) in accordance with the topographic code
- Renewal of under-rail concrete
- Development of the Project Specific Construction (including lifting plans), QA/QC, and HSE Documentation
- Quality Control of the fabricated elements (Dimensional control, NDT of welding joints, Paint inspection etc.)
- Final documentation and project delivery

# Project Overview



# Project Overview



# Project Overview



# Construction Related Projects

---

Client: NORM OJSC

Contractor: HECOTECH LLC

Project: Insulation of E24 electrical building roof

## Scope of Work:

- Project Management and Project Planning
- Project Management and Project Planning
- Project Data & Document Management
- Development of the Project Specific Construction (including lifting plans), QA/QC, and HSE Documentation
- Management of Technical Changes
- Procurement of the materials
- Mobilization and demobilization
- Construction of a parapet with quarry stone along the perimeter of the roof
- Installation of drainage channels
- Repairing existing cracks with repair mortar
- Laying the 1st layer of protective geotextile
- Applying a UV-resistant membrane for waterproofing
- Laying the 2nd layer of protective geotextile
- Laying of XPS protective layer
- Laying a vapor barrier layer
- Laying stone-gravel (washed twice and without sand)
- Final documentation and project delivery

# Project Overview





# Project Overview



# Construction Related Projects

---

**Client:** NORM Cement Plant

**Contractor:** HECOTEC LLC

**Project:** Reinforcement Works at Clinker Cooling Plant

## Scope of Work:

- Project Management and Project Planning
- Project Data & Document Management
- Development of the Project Specific Construction (including lifting plans), QA/QC, and HSE Documentation
- Procurement of the materials
- Mobilization
- Reinforcement of the current steel framework
- Cutting works in the cooler plant at 8+ height
- Conducting lifting operations
- Sandblasting, painting and welding works
- Installation of assembled structure
- Demobilization
- Final documentation and project delivery

# Project Overview



# Project Overview



# Construction Related Projects

---

Client: NORM Cement Plant

Contractor: HECOTEC LLC

Project: General Concrete Works

## Scope of Work:

- Project Management and Project Planning
- Project Data & Document Management
- Development of the Project Specific Construction, QA/QC, and HSE Documentation
- Procurement of the materials and Mobilization
- Topographic mapping of the area
- Excavation and concrete breaking works
- Providing layer material and compacting the area
- Assembling the reinforcement steel (rebar)
- Preparation and installation of formworks
- Concrete pouring
- Cutting expansion lines in concrete
- Demobilization
- Final documentation and project delivery

# Project Overview



# Project Overview



# Construction Related Projects

Client: NORM Cement Plant

Contractor: HECOTEC LLC

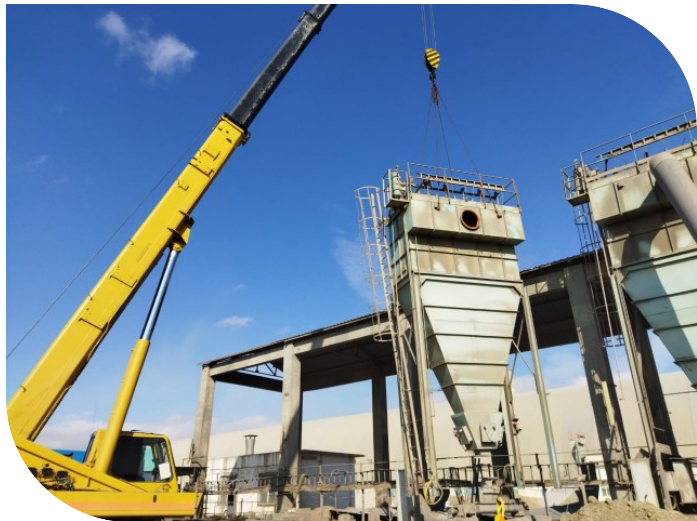
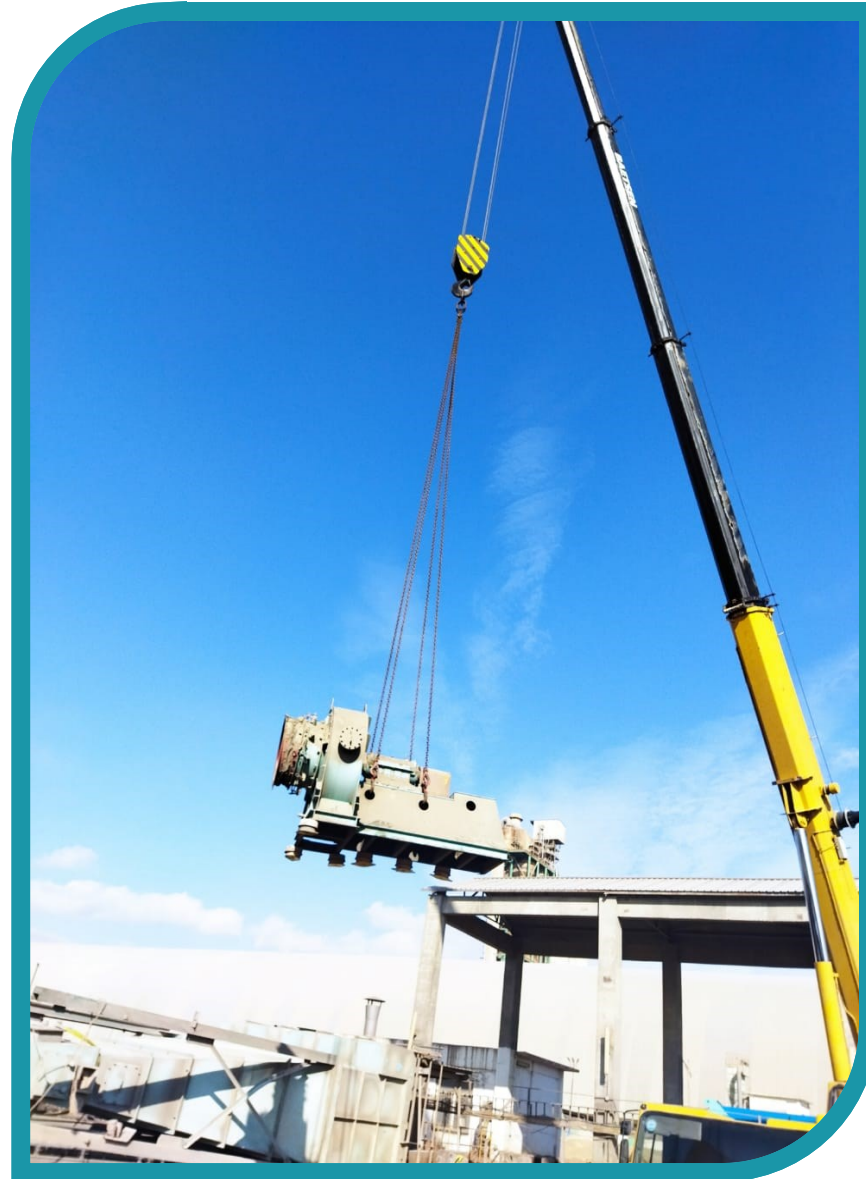
Project: Bag filter installation and modification works in cement silo elevators

## Scope of Work:

- Project Management and Project Planning
- Project Data & Document Management
- Development of the Project Specific Construction, QA/QC, and HSE Documentation
- Procurement of the materials
- Mobilization
- Dismantling the existing filter in the cement mill
- Dismantling the filter in the unloading area and bringing it to the vicinity of the cement mill
- Cutting and shortening the existing hopper and replacing the part where the hopper body is joined by welding with a bolted joint
- Modification works of the existing metal structure
- Removing the valve from the existing filter and installing it on the new filter
- Installation of suction boilers (chutes) according to the drawing
- Dismantling and removal of existing air belts, replacement with new ones and modification works
- Demobilization
- Final documentation and project delivery



# Project Overview



# Project Overview



# Construction Related Projects

---

Client: NORM Cement Plant

Contractor: HECOTECH LLC

Project: Fabrication and Installation of Safety Platforms

## Scope of Work:

- Project Management and Project Planning
- Project Data & Document Management
- Development of the Project Specific Construction (including lifting plans), QA/QC, and HSE Documentation
- Procurement of the materials
- Mobilization
- Preparation of platforms in workshop
- Sandblasting, painting and welding works
- Assembling carcass with 5mm thick corrugated sheet
- Installation of the safety platforms in the plant
- Demobilization
- Final documentation and project delivery

# Project Overview



# Project Overview



# Construction Related Projects

---

**Client:** NORM Cement Plant

**Contractor:** HECOTEC LLC

**Project:** Expansion of Clinker Storage

## Scope of Work:

- Project Management and Project Planning
- Project Management and Project Planning
- Project Data & Document Management
- Development of the Project Specific Construction, QA/QC, and HSE Documentation
- Preparation of conceptual design / pre-FEED
- Detailed Engineering
- Selection and procurement of the materials
- Cutting the concrete retaining wall shown in the drawing up to +0.000 level
- Construction of C30-37 concrete belt and columns for retaining wall
- Preparation of reinforcing mesh of concrete girders and columns for retaining wall (A500C)
- Concrete girders and formwork for retaining wall
- Two layers of sawn stone masonry for the retaining wall
- Final documentation and project delivery

# Project Overview



# Project Overview





# Construction Related Projects

---

**Client:** NORM Cement Plant

**Contractor:** HECOTEC LLC

**Project:** Concrete works at truck unloading area

## Scope of Work:

- Project Management and Project Planning
- Project Data & Document Management
- Development of the Project Specific Construction, QA/QC, and HSE Documentation
- Procurement of the materials and Mobilization
- Topographic mapping of the area
- Excavation and concrete breaking works
- Providing layer material and compacting the area
- Assembling the reinforcement steel (rebar)
- Preparation and installing of formworks
- Concrete pouring
- Cutting expansion lines in concrete
- Demobilization
- Final documentation and project delivery

# Project Overview



# Project Overview



# Construction Related Projects

---

Client: NORM Cement Plant

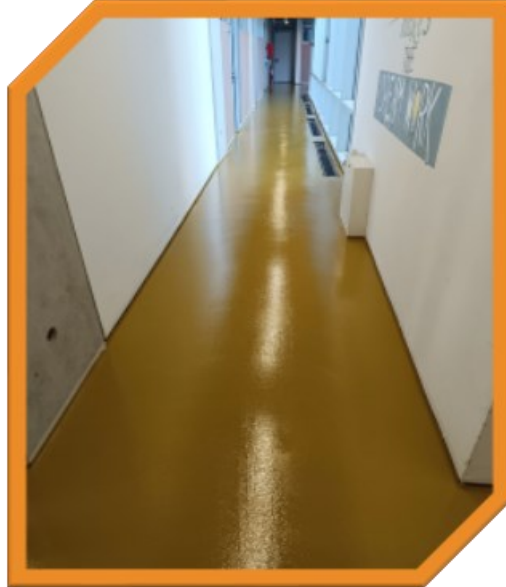
Contractor: HECOTEC LLC

Project: Epoxy works at main building floor

## Scope of Work:

- Project Management and Project Planning
- Project Data & Document Management
- Development of the Project Specific Construction, QA/QC, and HSE Documentation
- Procurement of the materials
- Mobilization
- Cleaning the floor from existing epoxy paint and polishing with an electrical tool.
- Repairing the floor of the room with quartz sand-containing lining material and bringing it to the same level by polishing.
- Filling all the cracks
- Injection of Epoxy Primer
- Applying the epoxy finish
- Demobilization
- Final documentation and project delivery

# Project Overview



# Construction Related Projects

---

Client: NORM Cement Plant

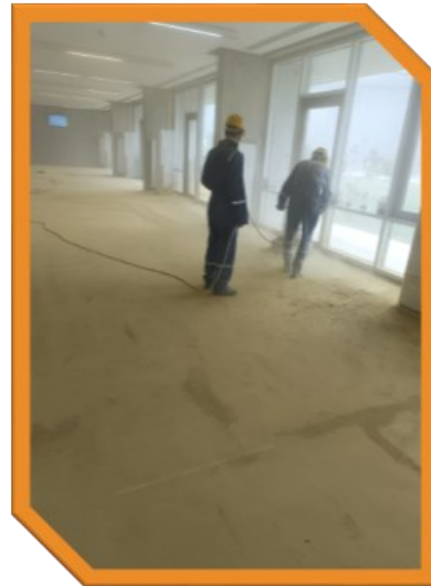
Contractor: HECOTEC LLC

Project: Epoxy works on dining-hall floor

## Scope of Work:

- Project Management and Project Planning
- Project Data & Document Management
- Development of the Project Specific Construction, QA/QC, and HSE Documentation
- Procurement of the materials
- Mobilization
- Cleaning the floor from existing epoxy paint and polishing with an electrical tool.
- Repairing the floor of the room with quartz sand-containing lining material and bringing it to the same level by polishing.
- Filling all the cracks
- Injection of Epoxy Primer
- Applying the epoxy finish
- Demobilization
- Final documentation and project delivery

# Project Overview



# Project Overview





# Construction Related Projects

**Client:** NORM Cement Plant

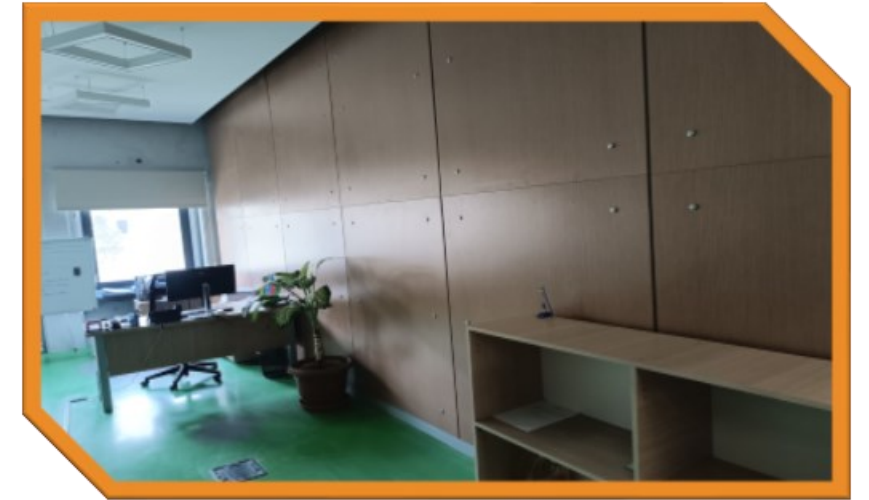
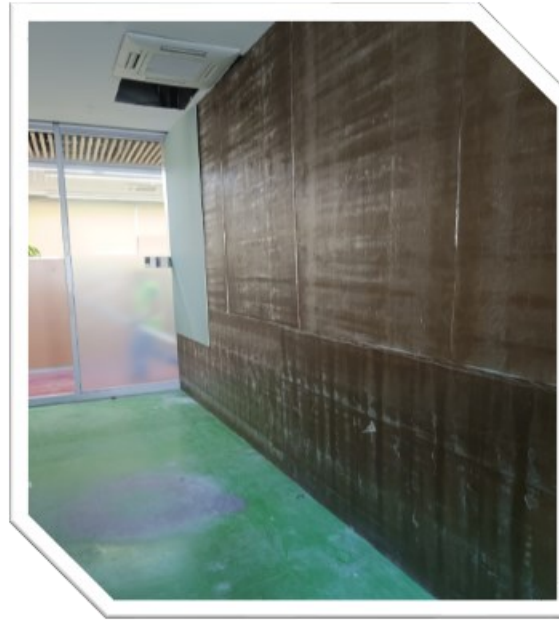
**Contractor:** HECOTEC LLC

**Project:** Partition wall construction in the laboratory room

## Scope of Work:

- Project Management and Project Planning
- Project Data & Document Management
- Development of the Project Specific Construction, QA/QC, and HSE Documentation
- Procurement of the materials
- Mobilization
- Cutting and removing plasterboard lining on the ceiling along the wall line in order to ensure that the wall rises up to the concrete ceiling
- Preparation and installation of the frame from C profiles according to the drawing.
- Insulation of profile gaps with 100 mm mineral stone wool (without gaps). Density  $\geq 100\text{kg/m}^3$
- Application of SoundGuard Membrane 3.9 S soundproofing material on the side of the wall intended for double plasterboard before the second layer of plasterboard.
- Plastering of lining and facing plaster on the wall from both sides, painting of the wall
- Covering the wall on both sides with MDF + Membrane coated material suitable for existing pans.
- Demobilization
- Final documentation and project delivery

# Project Overview



# Construction Related Projects

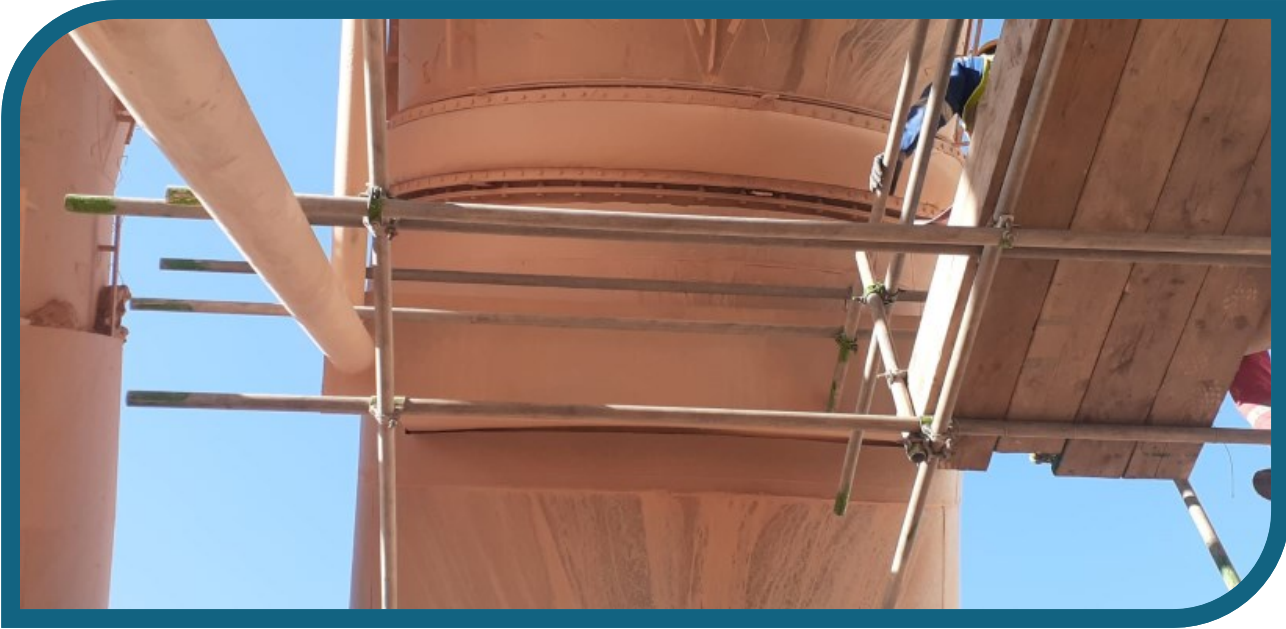
Client: Holcim Azerbaijan

Contractor: HECOTEC LLC

Project: Replacing the Compensator located on the gas pipe

## Scope of Work:

- Project Management and Project Planning
- Project Data & Document Management
- Development of the Project Specific Construction, QA/QC, and HSE Documentation
- Procurement of the materials
- Mobilization
- Installation of a scaffold on the gas pipe where the compensator will be replaced
- Cutting out the old compensator
- Removing the flanged pipe by cutting it from both sides
- Preparation of new flanged pipes according to the drawing
- Installation of newly made flanged fitting pipes in place of removed old flanged pipes
- Installation of a new compensator
- Dismantling and removing the scaffold installed on the upper part of the gas pipe of VRM
- Demobilization
- Final documentation and project delivery





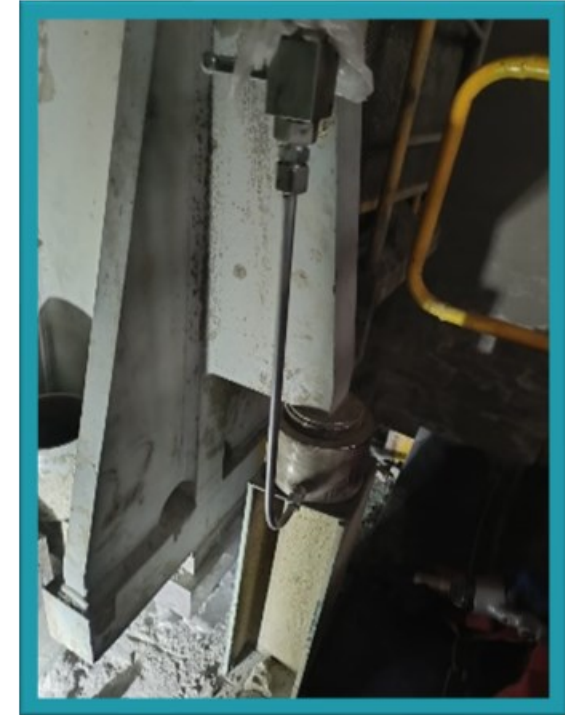
# Construction Related Projects

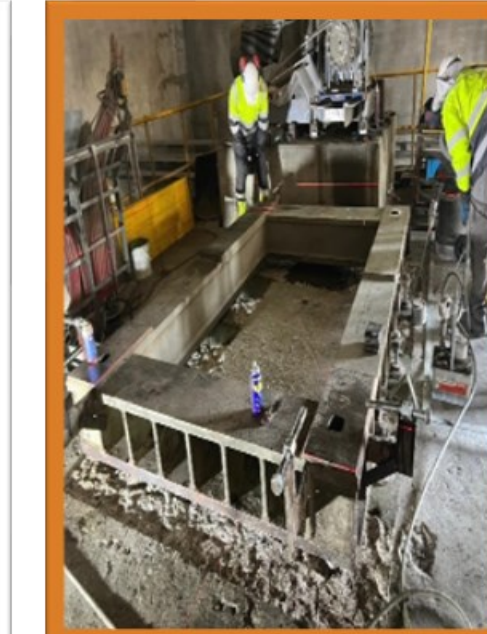
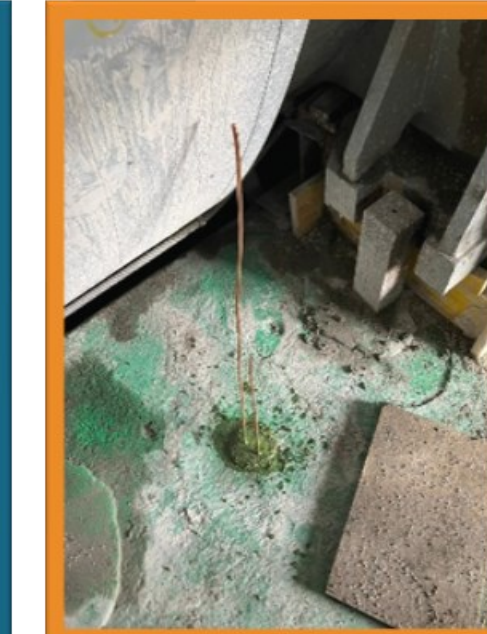
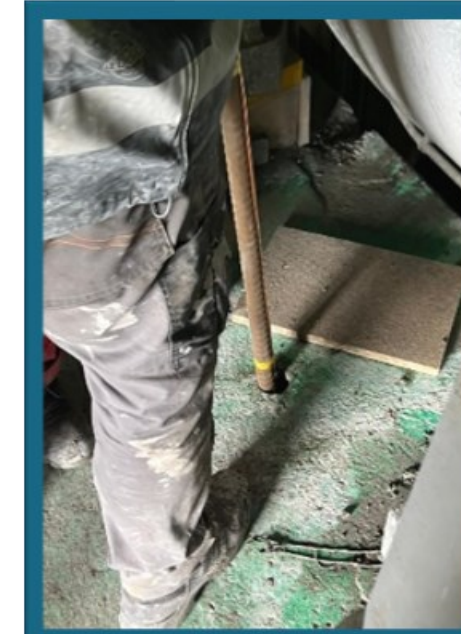
Client: NORM Cement Plant

Contractor: HECOTEC LLC

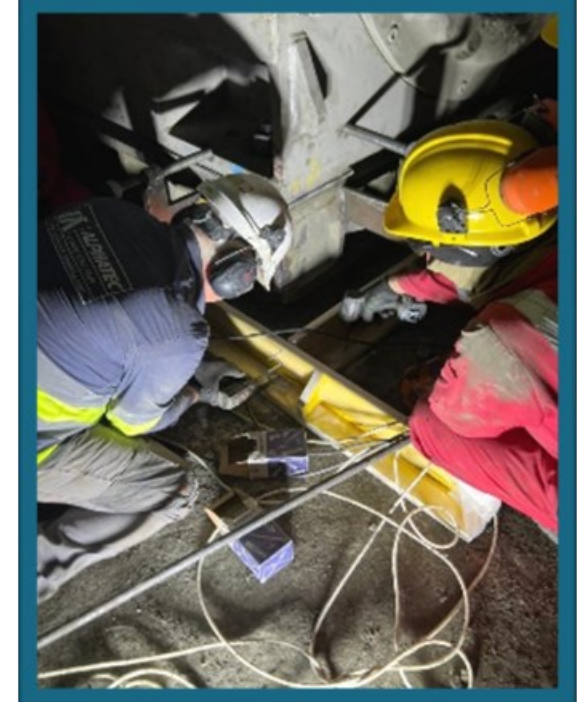
## Scope of Work:

- Mobilization
- **Reference Setup:** Establish valid references for motor skid position and check initial alignments.
- **Foundation Work:** Loosen foundation bolts, remove existing grout around the skid.
- **Surface Preparation:** Chip at the skid/motor foundation to reach sound concrete/grout.
- **Gearbox Support:** Use Alphapad® or hydraulic jacks for supporting and preparing the gearbox.
- **Injection Hole Drilling:** Drill holes for epoxy injection.
- **Injection Hole Preparation:** Clean, dry, and prepare holes with reinforcing materials.
- **Epoxy Resin Injection:** Inject ALPHATEC® 342 to fill voids.
- **Alignment Check:** Ensure proper alignment of gearbox to mill.
- **Formwork Installation:** Install formwork and seal with epoxy putty.
- **Final Grouting:** Pour ALPHATEC® 800 to cover soleplate.
- **Motor Skid Installation:** Place motor skid frame, possibly with motor.
- Demobilization
- Final documentation and project delivery









# Construction Related Projects



## Construction and Maintenance Projects:

- Umid settlement Youth Center Capital Maintenance and Restoration
- Holcim Cement Plant Construction of the New Tire Washing Station
- PMD Projects Qalalti Hotel fit-out Works
- Norm Cement Plant construction of the main water pipeline and wastewater system
- Holcim Cement Plant Maintenance and Restoration of facility buildings
- McDonald's Azerbaijan Fit-out Works
- Norm Cement Plant Capital Maintenance and Restoration of concrete surfaces
- Installation of 2500 m cable trays for Shahqaya quarry at Holcim Cement Plant
- Adjustment and Repair of fans at Norm Cement Plant
- Concrete works to prevent rainwater ingress to the lower level of line 321 BC 02 at Norm Cement

## Scaffolding Projects:

- The Dispensary Against Cancer No. 4
- Baku Health Centre
- SOCAR Administrative Building
- Neftyor T.T. - Assembling of the scaffolds for concrete works
- "Dada Gorgud" Submersible Drilling Rig
- "Khankendi" Subsea Construction Vessel

# Construction Related Projects

---

## Mechanical, Electrical and Plumbing Projects:

- MEP works for Boiler Rooms of Schools. Ministry of Education of Azerbaijan Republic
  - Quba District - 4 Schools
  - Khachmaz District - 2 Schools
  - Shabran District - 2 Schools
  
- MEP works in pump rooms, boiler rooms and swimming pools of the dormitory camp for 514 people. AzeraqrarTikinti
- Installation of the HVAC, plumbing systems, pump stations, fire and gas detection and fighting systems. Ministry of Agriculture of Azerbaijan Republic
  - Khachmaz, Sheki and Aghjabadi Districts
  
- Installation of the HVAC, boiler rooms, pump stations, plumbing systems and F&G detection and fighting systems. Ministry of Defense of Azerbaijan Republic
  - Goranboy and Beylaqan Districts

# Construction Related Projects

---

- Installation of boiler room, chiller, HVAC, F&G detection and fighting systems, pump station and plumbing systems. Azerbaijan State Flag Square
- Installation of communication systems for schools. State Committee for Affairs of Refugees and Internally Displaced Persons of the Republic of Azerbaijan
  - Sumqayit city and Kurdakhani Districts
- Construction of 5 km irrigation system, installation of 5 ea 90 kVt pumps and 3 ea 2000 m<sup>3</sup> water tanks in Fuzuli District
- Installation of the wastewater treatment equipment and pump station as per the outstanding technical requirements. U.S. Embassy in Azerbaijan Republic
- Construction of the new administrative building of Sheki District Court and Installation of the Climate Control System. World Bank and Ministry of Justice of Azerbaijan Republic

:

:


# Construction Related Projects

---

## Blasting, Coating, and Insulation Projects:

- SOCAR Carbamide Plant - Blasting and Painting of the Storage Tanks
- Norm Cement Plant - Blasting and Painting of the kilns
- Norm Cement Plant - Isolation of the Roof
- North-West Construction - Blasting and Coating of the Pipes
- Pasha Construction - Blasting and Painting of the Metal Structures
- Norm Cement Plant - Waterproofing of the bag storage roof at the level of +8000mm

## Structural Projects:

- Replacement and Repairing of the out-of-order and damaged structures for the Holcim Cement Plant
  - Construction of the Mobile Schools
  - Maintenance and Installation of Mechanical Components, hull, and tanks of 150 m Grain Ship
  - Fabrication and installation of the sliding roof above the main bag filter and the upper filter chamber at NORM Cement Plant
- 

# Construction Related Projects

---

## Rope Access Projects:

- Norm Cement Plant - Installation of the lifeline system
- Norm Cement Plant - repair works on the roof of the buildings
- Norm Cement Plant - Installation of the lifeline system on the roofs of office, dining and fitting rooms
- Norm Cement Plant - cleaning works inside of the chimney, concrete pouring works
- Azinko Holding - Installation and replacement of stained glasses and isolation works
- Baku Aquatic Palace installation of the fire fighting system and MEP works
- Mingachevir Hydro Power Plant - painting works

# Our Licenses



License for Conducting Diagnostics and Technical Inspections of Equipment and Devices Operated at Potentially Hazardous Facilities



License for the Design of Buildings and Facilities Requiring Construction Permits and Subject to Information Procedures



License for the Construction and Installation of Buildings and Facilities Requiring Permission



License for the Installation of Liquid and Natural Gas Facilities



License for the Installation and Repair of Lifting Equipment, Metallurgical Equipment, Pressure Boilers, and Tanks



License for Installation, Maintenance, and Repair of Fire Protection Systems and Equipment



# Our Certificates



# Our Partners



We are



and we are with you  
from the beginning till the end

# Contact Details



**Country & City:** Azerbaijan, Baku

**Address:** Mardanov Gardashlari 59

**Postal Code:** AZ1014

**Web Site:** [www.hecotec.az](http://www.hecotec.az)

**E-mail:** [info@hecotec.az](mailto:info@hecotec.az)

**LinkedIn:** HECOTEC Industrial Development Company

**Tel.:** +994 50 448 46 66

